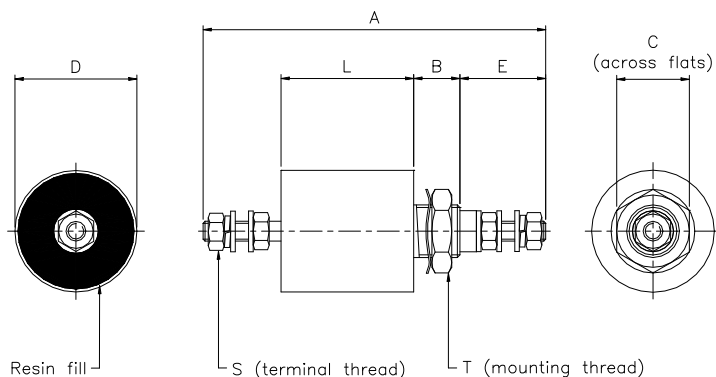




Syfer Technology Limited
Old Stoke Road
Arminghall, Norwich, Norfolk
NR14 8SQ England

Tel: +44 (0)1603 723300
Fax: +44 (0)1603 723301
Email: sales@syfer.co.uk
Web: www.syfer.com

Syfer Plastic Film Capacitor Type SLFLC0630206M11



MECHANICAL DETAILS (All dimensions in mm UOS)									
A ± 1	B ± 1	C	D ± 0.5	E ± 2	L ± 1	T	S	Mounting Torque (T)	Mounting Torque (S)
77	14	22	25	18	30	M16 x 1	M4	7 N-m Max	1.2 N-m Max
TYPICAL WEIGHT (g)					75				
MATERIALS									
CASE					NICKEL PLATED BRASS OR STEEL				
THROUGH CONDUCTOR					NICKEL PLATED BRASS				
CAPACITOR					POLYESTER FILM				
INDUCTOR					NONE FITTED				
ENCAPSULATION					RESIN FILL (UL94 V-0)				

ELECTRICAL DETAILS						
Circuit	CURRENT I_R A @ 60°C	CAPACITANCE μF	INDUCTANCE nH	WORKING VOLTAGE	V TEST dc	INSULATION RESISTANCE MΩ minimum
C	32**	20 ± 20%	N/A	63Vdc	120	100

** - Max Operating Temperature = 85°C. Current derating between 60°C and 85°C. For temp T. $I_T = I_R \sqrt{(85 - T) / 25}$
Category Temperature Range -40°C / +85°C ; Climatic Category 40/85/21

TYPICAL INSERTION LOSS 50Ω (Full Load)*								
FREQUENCY	10kHz	30kHz	100kHz	300kHz	1MHz	10MHz	100MHz	1GHz
INS LOSS dB	30	40	50	60	68	90	90	90

* - Note insertion loss quoted with full load current flowing. Under full load conditions filters with ferrite bead inductors will suffer from saturation of the inductor and subsequent loss of performance compared to no load performance.

MTBF : Typically 5,000,000 hours for mobile ground environment (IAW MIL-HDBK-217)

Registered Office: Old Stoke Road
Arminghall, Norwich NR14 8SQ England
Registered in England: No 2092166

(FA4/971/1)



EMS 68436
ISO14001: 1996

M1043 IECQ-CECC

FM 21663
ISO9001: 2000

Power Filter Datasheet No. SLFLC0630206M11 / A